

# Transform Data Into Value Using Stibo Systems Embedded Analytics Platform (EAP)

High-quality data creates a foundation for success. The ability to convert it into actionable insights provides the key to improving performance.

Stibo Systems Embedded Analytics Platform (EAP) offers the essential insights needed to drive targeted business operations. Using MDM with embedded analytics, users across the business can:

- Blend master data from across one or more domains with data from other systems into a holistic view of business performance
- Explore complex data relationships to uncover unique, business building opportunities and insights
- Connect sales, inventory, click streams, social and IoT data back to your master data

Stibo Systems Embedded Analytics Platform is fully-integrated into our Multidomain Master Data Management (MDM) solution. It offers visual modeling and dashboard design and the ability to instantly react to insights directly in your MDM application.

## What you can do with EAP

MDM with an EAP enables a broad range of business building analytics initiatives, for example:

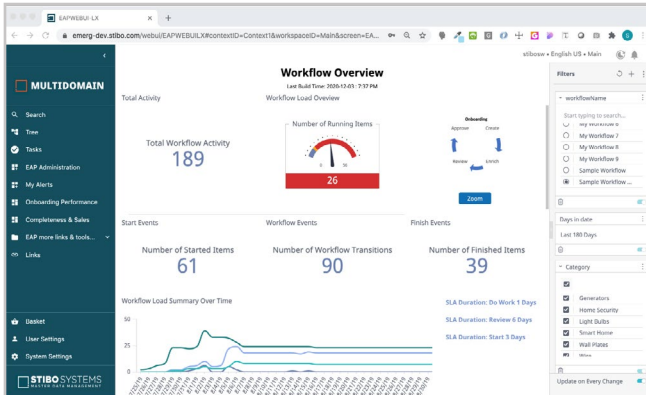
1. See what types of product data impact sales. View product attribution with sales stats by category, detect patterns and launch an action to optimize your data for improved performance.
2. Compare suppliers' performance and customer ratings to drive quality and process improvements.
3. Identify and remove time-consuming steps for onboarding products. It may not be the time spent on each cycle, but the number of rework cycles for each product.
4. Discover sales and returns by channel and product category over time.
5. Leverage descriptive, predictive and prescriptive analytics to empower users to make decisions and take actions that drive results.

## Key benefits of Stibo Systems EAP

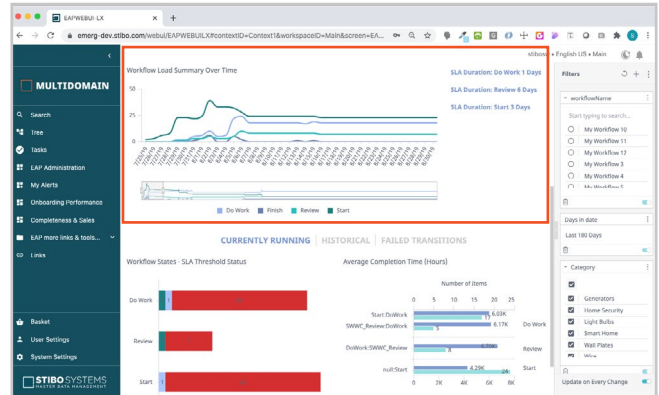
- **Predefined dashboards for quick time to value**  
Predefined dashboards empower users to achieve quick results. Or define custom dashboards and widgets using built-in visual data design and analytical modeling tools.
- **Analyze blended data across domains/sources**  
Merge and blend data from multiple domains and sources, including transactional, sales, social and marketing data.
- **Fully-integrated, seamless UX**  
View and model analytics in the same interface where you interact with your master data using a single sign-on (SSO) for accessibility, speed and simplicity.
- **A complete platform**  
In addition to modeling and visual design, EAP enables trend analysis with automated outlier detection, proactive alerts, plug-in capabilities, a built-in data security layer and more.
- **Single vendor**  
An end-to-end solution, including licensing, installation, configuration, upgrades, authentication and support. A single point of contact eliminate the complexity of working with/integrating multiple vendors and systems.
- **Ambitious roadmap**  
Analytics is a high-priority and we'll continue to add features/functionality to target new challenges. It is also essential to implementing and extracting incremental value from a Digital Business Hub.

## Predefined dashboards ensure quick time to value

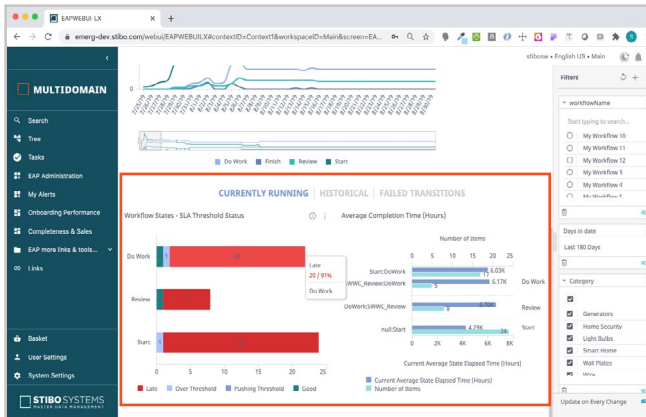
Stibo Systems Embedded Analytics Platform includes built-in, preconfigured widgets and dashboards to deliver rapid time to value and to empower users across the organization to extract business building insights. This includes a new Workflow Performance Dashboard to monitor configured workflows and to explore workflow data over time and measure against performance targets or SLAs assigned to a workflow.



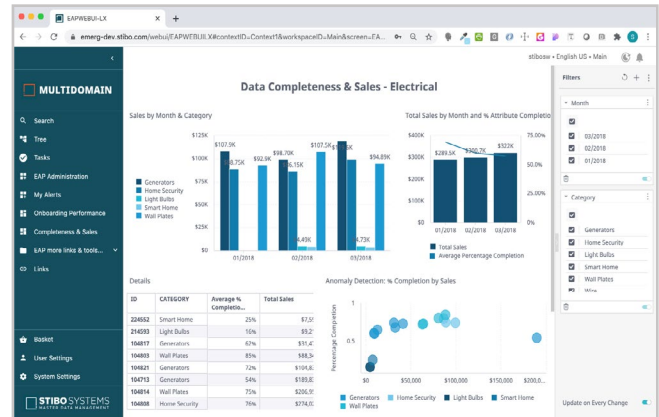
*New Workflow Performance Dashboard allows users to review and monitor team activity within workflows and determine if additional resources are required.*



*Monitor workflow trends and loads over time, as well as measure against current SLA durations. Users can identify peaks, improve efficiency, identify bottlenecks and more.*



*Proactively identify items approaching deadline limits and act before they exceed SLAs. Comparisons of historical data can be used to drive executional efficiency.*



*Customize dashboards to blend data from across domains and internal and external data sources to drive actionable insights, business decisions and growth.*

Stibo Systems Embedded Analytics Platform is powered by Sisense, a proven, industry-leading analytics and BI provider specializing in embedded solutions and ranked #1 in customer satisfaction in that field. Through seamless integration within our Multidomain MDM interface, we empower everyone to make faster, more informed decisions, from end users to experienced IT, data science and analytics teams. To find out how to bring the power of EAP to your organization, visit [stibosystems.com/eap](http://stibosystems.com/eap).

### About Stibo Systems

Stibo Systems, the master data management company, is the trusted enabler of data transparency. Our solutions are the driving force behind forward-thinking companies around the world that have unlocked the strategic value of their master data. We empower them to improve the customer experience, drive innovation and growth and create an essential foundation for digital transformation. This gives them the transparency they require and desire – a single, accurate view of their master data – so they can make informed decisions and achieve goals of scale, scope and ambition. Stibo Systems is a privately held subsidiary of the Stibo A/S group, founded in 1794, and is headquartered in Aarhus, Denmark. More at [stibosystems.com](http://stibosystems.com).