

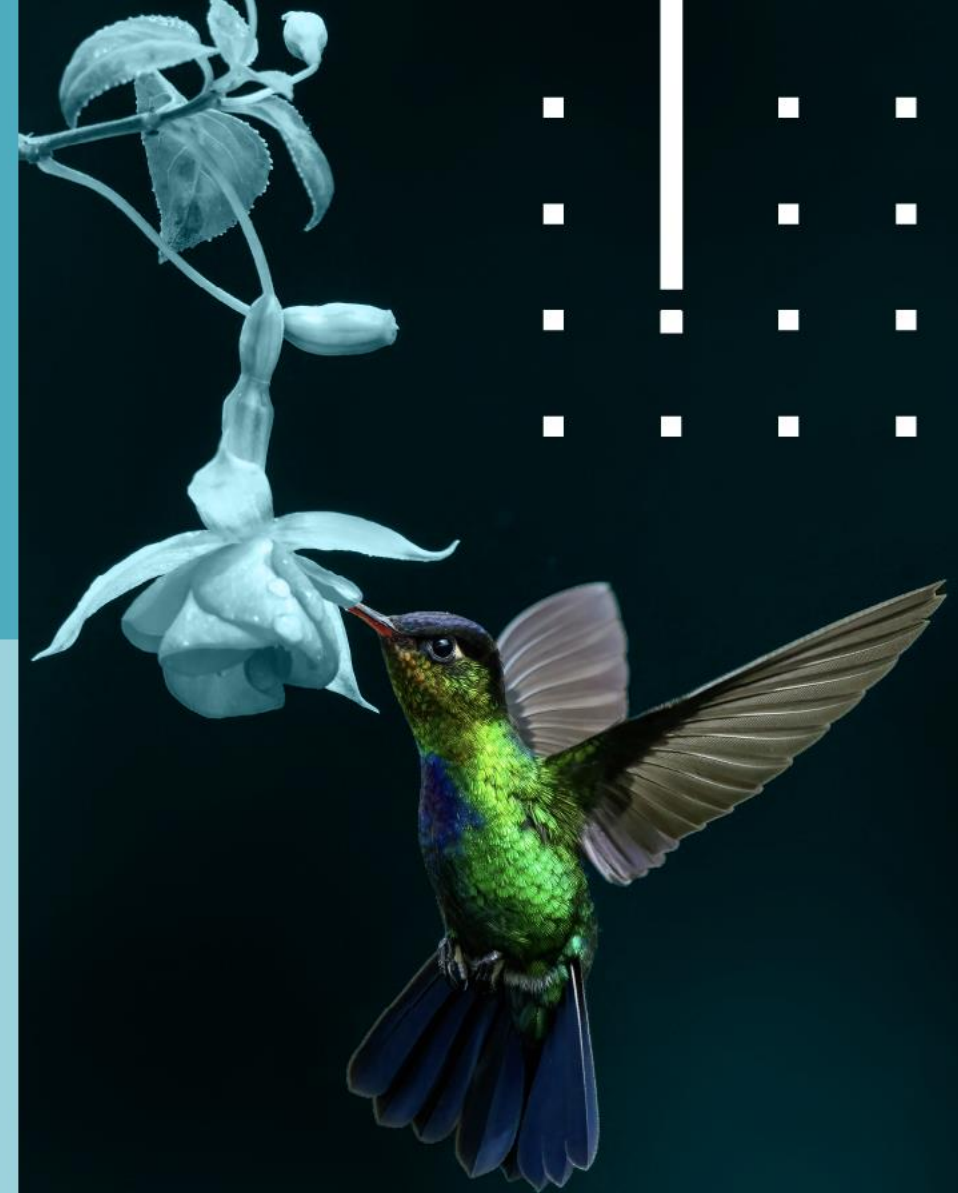
UPDATE 2025.2

# Update Preview

May 2025



*2025.2 is only applicable to SaaS customers*



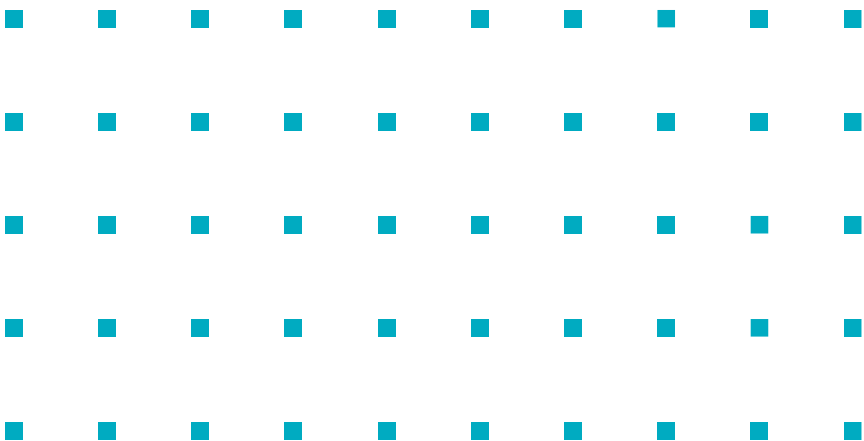
# Forward-Looking Statements

This document only focuses on the highlights of the upcoming Update and does not promote the Update in its entirety.

All statements made in this document other than statements of historical fact are forward-looking statements. Forward-looking statements are based on the then-current expectations, beliefs, assumptions, estimates and forecasts about the business of Stibo Systems and the industries and markets in which Stibo Systems operates.

These statements are not guarantees of future performance and involve risks, uncertainties and assumptions, which are difficult to predict. Therefore, actual outcomes and results may differ materially from what is expressed or implied by these forward-looking statements.

While we listen to input and feedback from our customer and partner community it is up to Stibo Systems to prioritize development of features and products. Prioritization is always subject to current market conditions, availability of resources, the state of the art and demand - and as an effect thereof will change over time. Not all ideas presented to Stibo Systems will be prioritized.



The background features a dark blue gradient with several concentric, semi-transparent circles in shades of light blue and yellow. On the right side, a bright blue sphere with a white highlight is partially visible, surrounded by these circular patterns. The overall aesthetic is futuristic and technological.

CONNECT 2025

DRIVE THE  
FUTURE

OCTOBER 6-8 / BERLIN, GERMANY

Explore the Event

# Navigate smoothly in an increasingly data-driven future



Expand your professional circle



Explore 60+ interactive sessions



Get inspired by real success stories



Book 1:1 time with experts



See our products in action



Unlock game-changing tools




Register early to lock in our best Super Early Bird pricing!

# Watch the 2025.2 Preview Video!



# Table of Contents

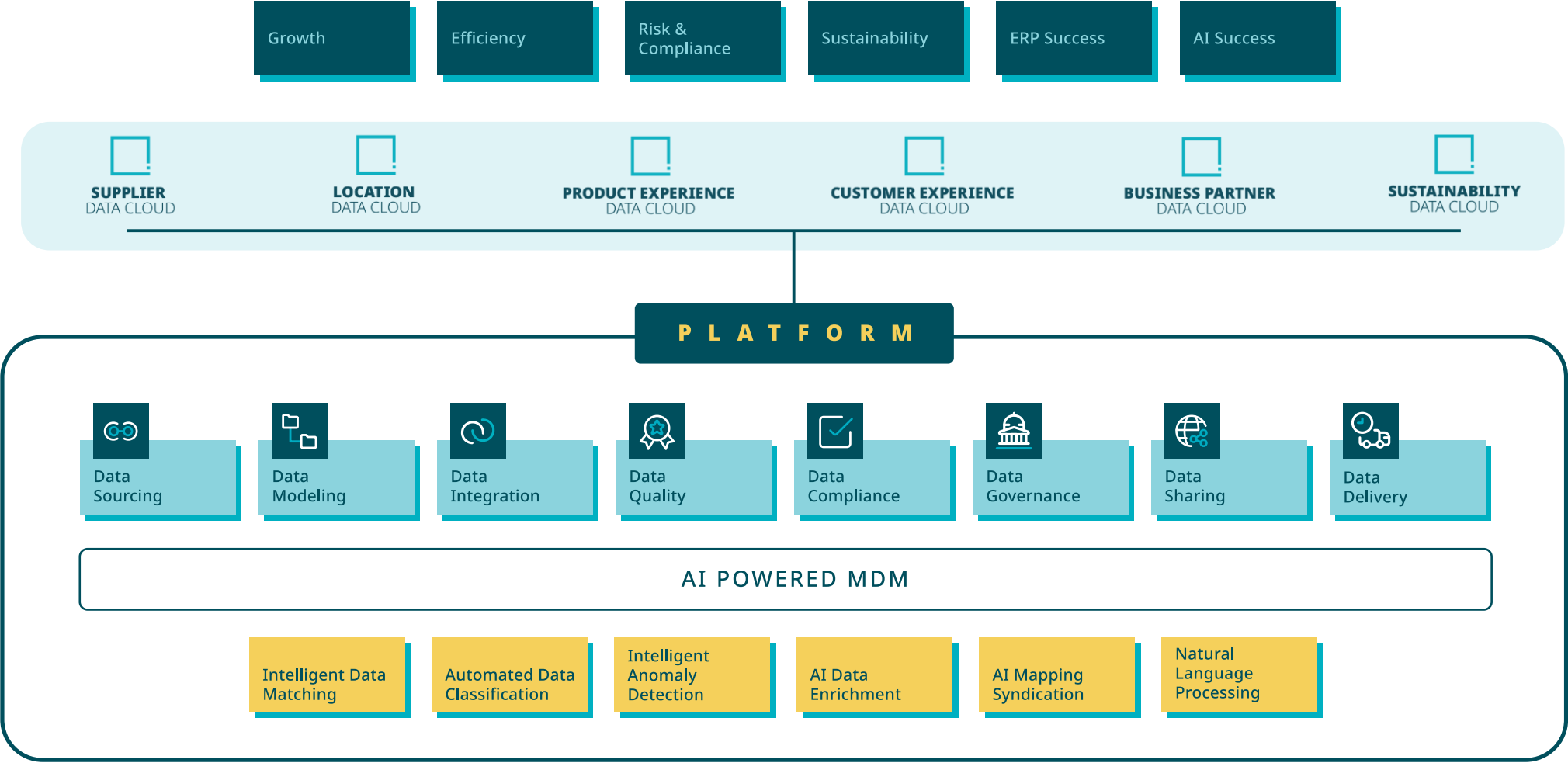
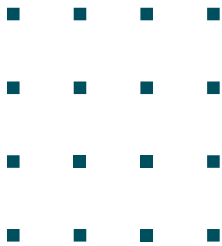


	<a href="#"><u>Product Portfolio</u></a>	Our solution at a glimpse!
	<a href="#"><u>2025.2 Update Initiative Map</u></a>	A quick look at what to expect with 2025.2!
	<a href="#"><u>2025.2 Highlights</u></a>	More on targeted 2025.2 initiatives!

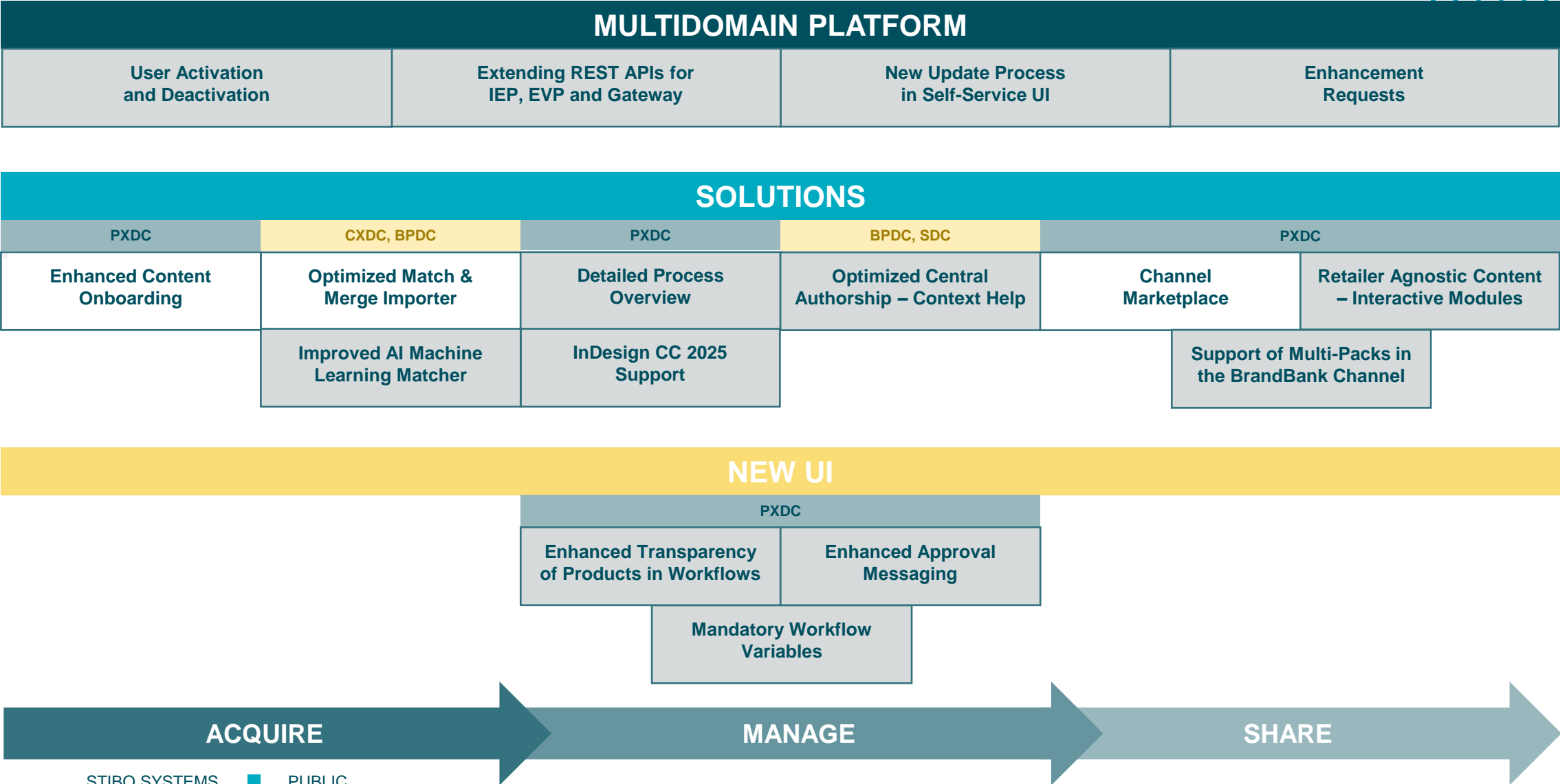




# Product Portfolio



# 2025.2 Update Initiative Map





# Enhanced Content Onboarding

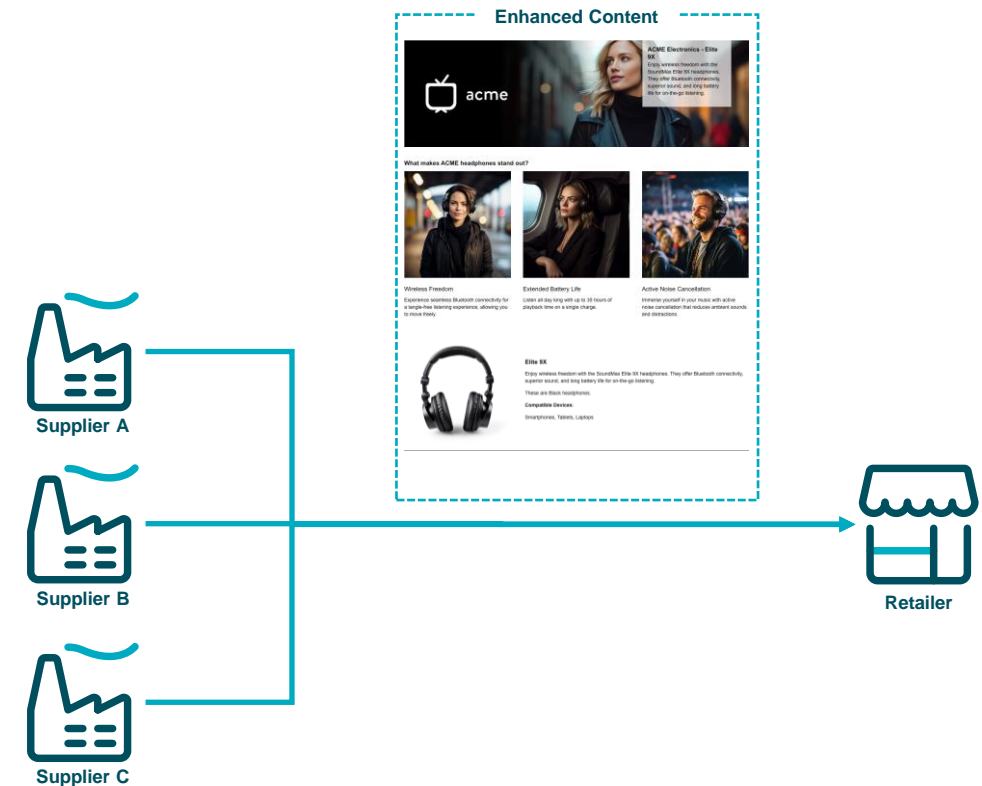
**Retailers struggle to efficiently onboard high quality and compliant enhanced content from their suppliers to boost the conversion rates of their listings**

Suppliers often provide content in varying formats, styles, and levels of detail, making it difficult for retailers to integrate this information seamlessly into their systems. Without standardized formats or guidelines, retailers spend excessive time and resources ingesting the content provided.

With 2025.2, retailers will be able to grant their suppliers access to a powerful toolkit allowing them to easily create engaging product stories to accompany their listings and deliver them using the Onboarding channel.

This approach will ensure standardization of the delivery method and format, but also the content look and feel across the Product Detail Pages (PDPs), thereby reducing the operational costs of the retailer and improving content consistency at the marketplace.

@BUSINESS USER



Available with the PDX Onboarding license ←

# Optimized Match & Merge Importer

## Improved performance, stability and traceability during imports

@ADMIN

As customer data volumes grow and MDM becomes more integrated with business systems and processes, enhancing performance, scalability, and providing access to trustworthy data is essential for success.

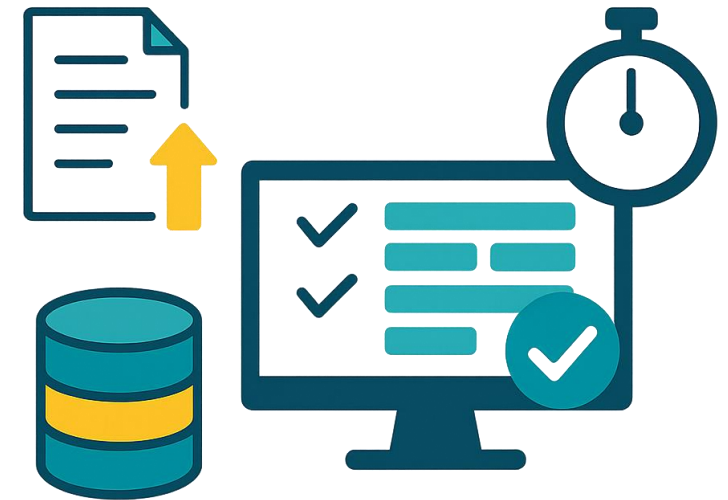
The Match & Merge importer has been significantly improved to deliver better performance, stability and traceability.

- Efficient data handling **delivers up to 50%** faster import operations
- Traceability improvements allow for simplified identification of slowdowns and troubleshooting
- Stability enhancements ensure more reliable processing, minimizing interruptions

In 2025.1, the improved version of the Match and Merge Importer was released to selected customers in close collaboration with the product team.

With 2025.2, the improved version of the Match and Merge Importer will be released to all STEP systems. Stibo Systems will enable it, in coordination with existing customers. No configuration changes are required.

**Up to 50% faster import operations**



Available with High Volume and Low Volume records ←

# Channel Marketplace

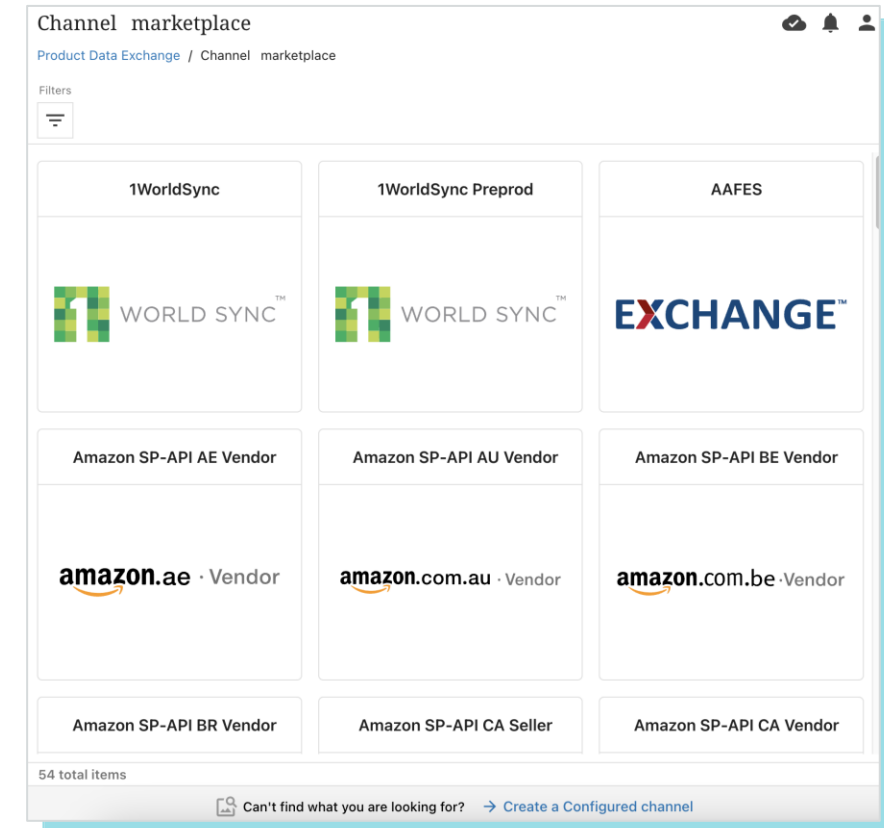
**Manufacturers and brand owners more than ever need to connect to their business partners and marketplaces in a seamless way**

@BUSINESS USER

Up until today, customers lacked transparency regarding available direct channels, which limited their ability to fully utilize more channels.

With 2025.2, we are developing a channel marketplace that will provide clear visibility into available direct channels and keep users informed about new channels being added. Additionally, we have leveraged the existing customer base to expand channel availability and to facilitate connections between Product Data Onboarding and Product Data Syndication.

The channel marketplace will enhance transparency and accessibility, empowering customers to leverage more channels efficiently. This will lead to improved adoption and streamlined onboarding, ultimately improving our customers' ability to connect with the outside world.



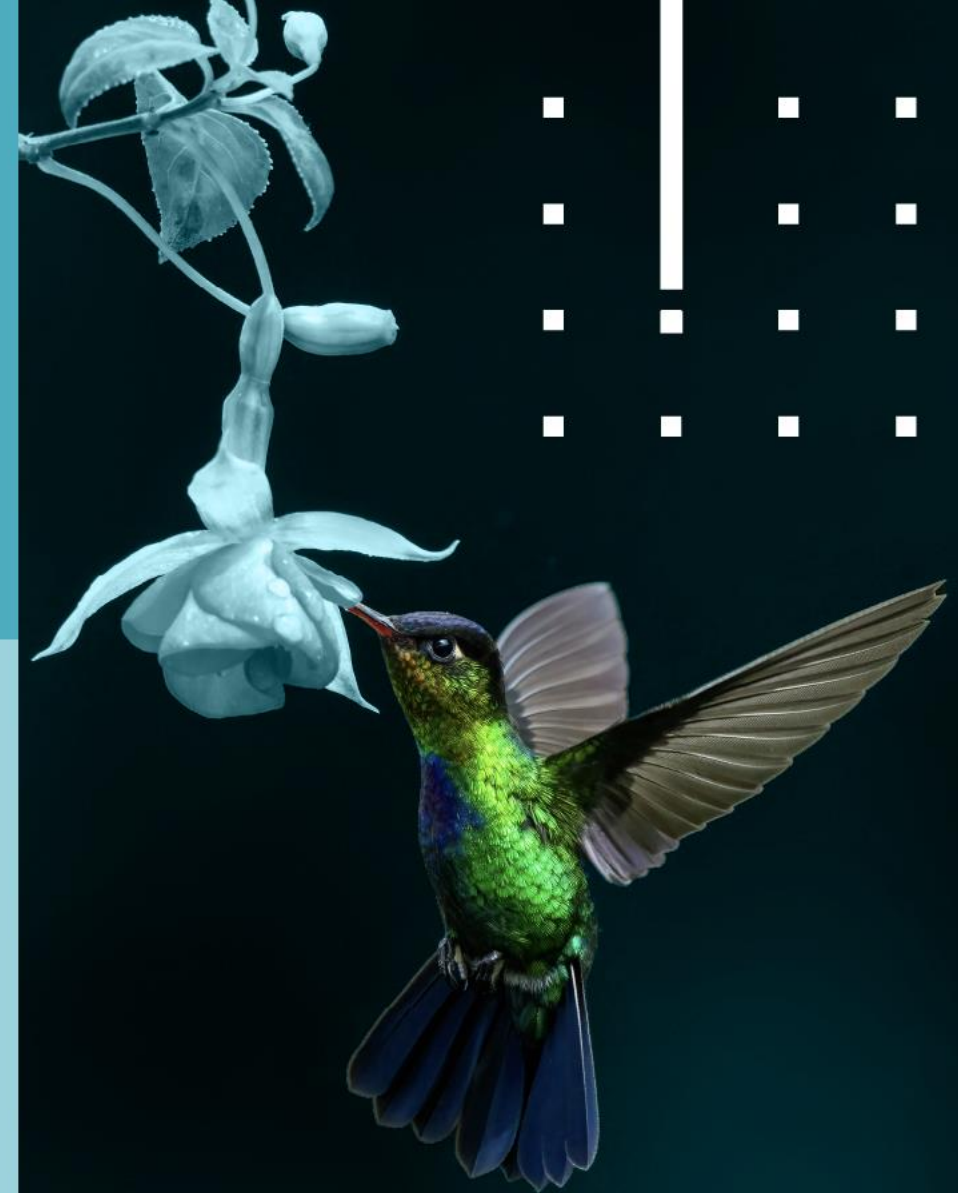
Available with PDX license ←

UPDATE 2025.2

# Save the Date

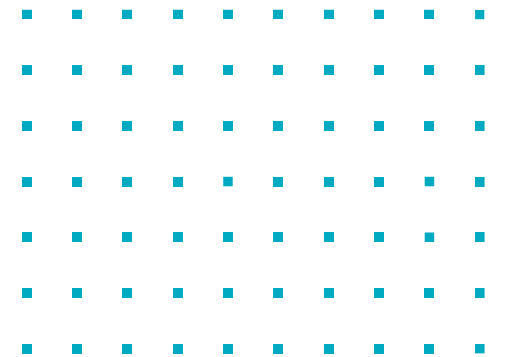
Customer Overview

June 18, 2025



# Follow Us!

Find us here for the latest news and updates





BETTER DATA. BETTER BUSINESS. BETTER WORLD.