



UPDATE NOTES

2025.1

March 2025

Table of Contents

Table of Contents	2
2025.1 Update Notes	5
Introduction	5
Quarterly Updates	6
Update Guide	7
Train and Connect	7
Installing STEP 2025.1	7
2025.1 Update Guide	9
Summary	9
Details	9
Exciting updates to our Enhancement Request Process	9
Default asset thumbnails updated	10
Categorize button enables expanded selections	10
Importing Instrument configurations	10
More audit messages	11
STEPXML schema changes from 2024.4 to 2025.1	11
Elasticsearch reindexing	11
Enhancements discontinued	11
Deprecated functionality	11
Functionality to be removed / discontinued	11
End-of-life schedule for STEP updates	12
Online Help / Documentation Changes	13
Developments in New UI for STEP	14
New objects created and initiated into workflows	14
Sorting and filtering in reference table of details page	15

Search filters improved	15
Improved tab display	15
Improved orphan attribute display	16
New Approve action button in the search screen toolbar	17
Customer, Supplier, and Location MDM Enhancements	19
Optimized performance of the Match and Merge Importer	19
'Unmerge Action' button disabled if unmerge is not possible	19
Enhanced connectivity between STEP and Salesforce	20
Data Exchange Enhancements and Changes	21
STEPXML options are expanded	22
JSON file import support for AutoCare	22
AutoCare Brand Importer now supports the updated brand model	23
BMEcat 2005.1 - output compliance with BMEcat 2005.2	23
FORDER Support in ECLASS Advanced Editor	23
General Enhancements and Changes	25
New last active date information for Users	26
Performance Analysis Tool now includes business rule data	27
Extended parameters for the Web UI HTML Function component	28
Expanded area for cursor response when changing column width of a Node List	28
Use of reflection in JavaScript business rules will be disabled in 2025.3	28
New 'patch' Gateway REST method	28
Platform and Software Support Changes	29
Current Updates	29
Deprecated functionality	29
Future Updates and End-of-Life (EOL) Notifications	29
Removal of functionality	29
Server and client support	29

Baseline EOL	29
Miscellaneous Bugfixes	31
General Fixes	31
Component Fixes	33

2025.1 Update Notes

Note: Some changes necessitate action, so it is crucial to review these notes thoroughly. They complement the Stibo Systems Enterprise Platform (STEP) Online Help, which offers comprehensive details on both existing and new system functionality, providing detailed explanations and step-by-step instructions for use, as applicable.

Introduction

We are excited to share the latest update with you. Stibo Systems consistently creates updates to align with the changing demands of the market and the needs of our valued customers, incorporating enhancements inspired by user requests. The update notes highlight a comprehensive range of new features, enhancements, and other changes that deliver significant value to customers—those mentioned below and many more. This update includes significant improvements in many areas, focusing on self-service capabilities, interface enhancements, and AI-driven features.

Platform Updates

- Workbench Launcher performance enhancements
- New theme for login screen
- Business Rules added to the Performance Analysis Tool
- Updates to the Self-Service UI

Product MDM Updates

- Expanded New UI capabilities:
 - Better control of displaying tabs
 - Ability to create objects within workflows
 - Approval from Search results

Customer, Supplier, and Location MDM Updates

- Stibo Systems MDM Connector for Salesforce
- Match & Merge 2.0

PDX Updates

- Onboarding localization capabilities
- Enhanced Content enhancements:
 - Delivery of agnostic content
 - Leveraging asset keywords from Product MDM below the fold content
- PREVIEW: Updated PDX Dashboard

Important: Some functionality described is controlled via licenses and/or component installations and may not be available on your system.

Update notes are accessible by clicking on the links below:

- [2025.1 Update Guide](#)
- [Developments in New UI for STEP](#)
- [Customer, Supplier, and Location MDM Enhancements](#)
- [Data Exchange Enhancements and Changes](#)
- [General Enhancements and Changes](#)
- [Platform and Software Support Changes](#)
- [Miscellaneous Bugfixes](#)

Note: Product Data Exchange (PDX) updates typically follow a different cadence than STEP updates. PDX-specific update notes and online help are available within the PDX solution. Once logged into PDX, click Help Center > Documentation using the left navigation panel. Documentation opens in a new tab.

Additional information is included in supplemental materials such as update overview slide decks and update-specific videos. These resources are available, along with these update notes, in the Stibo Systems Service Portal and within the Customer and Partner Communities.

Quarterly Updates

Feature updates are identified by the year and quarter in which they are introduced to customers. The first four digits (2025) indicate the year of the update. The last digit (1) indicates the calendar quarter. To learn more about update frequency, including target update times, and end-of-life baseline support dates, refer to the new STEP Update and End-of-Life Information topic in the System Update and Patch Notes documentation.

Along with the feature updates, there are also maintenance updates that are made available when fixes need to be deployed. The fixes are included in the regular maintenance updates. These updates follow the same baseline identifier plus timestamps (e.g., step-2025.1-2025-04-18-14-55-07).

Change Logs are accessible from within the Stibo Systems Service Portal. To view the logs, log in and go to the 'Update Information' dashboard. Change Logs are linked under each update version (for all supported versions of STEP). SaaS users will also be able to access these Change Logs via the STEP Documentation that is accessible from their system's Start Page or from within workbench.

Update Guide

In addition to the individual update notes, upgrading customers should read the 2025.1 Update Guide. This guide provides information that existing customers need to know prior to upgrading. This includes actions required for deprecated components and unsupported functionality.

The Update Guide includes information about actions that existing customers need to take prior to updating to the latest version.

Train and Connect

Expand your expertise and connect with fellow users.

Stibo Systems Academy

Maximize your investment in Stibo Systems Master Data Management (MDM) by taking Academy courses and completing our certification programs. The MDM Academy provides hands-on training opportunities for both customers and partners, aiming to enhance your understanding of Stibo Systems' MDM solutions. Comprehensive details regarding classes and programs can be found on our [website](#).

Stibo Systems Communities

We strongly encourage all [customers](#) and [partners](#) to actively participate in their dedicated Stibo Systems' Communities. Community initiatives are designed to help you maximize your experience, share knowledge, and build valuable relationships with peers who understand your challenges and goals. Stay updated on upcoming events and much more by registering today.

Installing STEP 2025.1

Note: On-premises installations are no longer supported.

For SaaS environments, updates can be done in the SaaS Self-Service UI or (if not available) by raising a request with Stibo Systems Support. More information on the update process in the SaaS Self-Service UI can be found in the Upgrade Environment section in the in-built User Guide.

For information on the preview period and mandatory updates, refer to the STEP Update and End-of-Life Information topic in the System Update and Patch Notes section of the documentation.

For customers that have custom add-on components and/or if Stibo Systems Support is deploying your system updates, submit an update request via the Stibo Systems Service Portal. For customers and partners who have built their own custom extensions with Extension API, evaluate the need to recompile and redeploy extensions prior to upgrading. Refer to the STEP Extension API Guide available via the Technical Documentation accessible at [system]/sdk or from the system Start Page.

This document is intended for use by active Stibo Systems Enterprise Platform (STEP) users and partners and describes the above and other new functionality and improvements in greater detail. It does not serve as a replacement for the online help, which includes additional information on previously existing and new system functionality, as well as more detailed explanations and step-by-step instructions for use, when appropriate.

2025.1 Update Guide

Summary

System updates are your first line of defense against security threats while also boosting performance, ensuring compatibility, and unlocking exciting new features that add value to your digital experience. Regular updates not only protect your data and keep your system running smoothly, but they also give you access to innovative tools and capabilities that can enhance your productivity and user experience.

Important: Customer action may be required.

- Before updating to 2025.1 from an older version, be aware of system changes. The list that follows may not be comprehensive; however, along with the full update note-set, it provides a starting point for update evaluation.
- Some components / functionality are moving to the next stage in their lifecycle. Refer to these online help topics: Deprecations and Lifecycle Changes and License and Component Lifecycle.
- Starting with 2025.1, on-premises installations are not supported.

Details

Exciting updates to our Enhancement Request Process

We are excited to announce that we are replacing our current 'Enhancement Request' process with a transparent, easy, and collaborative solution for managing suggestions from our users.

Many customers are already familiar with the 'Ideas' functionality in the Stibo Systems Communities, but for those who are not, highlights include:

- Ideas can be created by anyone in the Community and are visible to everyone (and shared between the Customer and Partner communities).
- Users are able to comment on one another's ideas, upvote them, and collectively engage on common topics of interest.
- The Product team monitors and engages with users on the ideas, focusing on those with the broadest applicability across our customers (e.g., those with the highest upvote score).
- Users can easily see what has been solved and what remains open, as well as the level of interest across the broader user base on any topic.

The 'Community Ideas Guide' includes an overview of the Ideas module in the Community, how the new process will work, and an FAQ. This guide is accessible from within the Communities and in the Document Repository section on the My Issues dashboard within the Stibo Systems Service Portal.

This process is already live in the Communities, so be sure to check it out. And, if not already registered for the Customer Community, sign up by clicking the Register button at <https://www.stibosystems.com/our-customers/community>.

Note: In mid-March, we will remove the ability to create Enhancement Request tickets in the Stibo Systems Service Portal. Previously submitted requests will continue to be reviewed and replied to, but all new suggestions will need to be submitted via the Communities, so be sure to activate your account before then.

We are looking forward to engaging with everyone in this transparent and collaborative environment. We are excited about the changes, and we hope that you are too. If you have questions or concerns that are not answered by the guide above, reach out to your Stibo Systems representative and we will be happy to speak with you further.

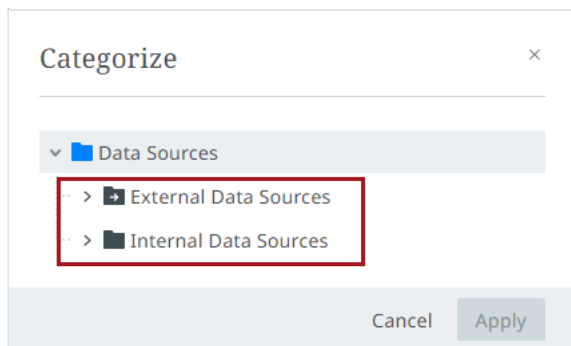
Default asset thumbnails updated

The default asset thumbnails that display for assets that do not have an associated image (e.g., MS Excel documents) now display updated thumbnail images. These changes went into effect for the 2024.2 update but apply to all systems updated to that or later versions.

It should also be noted that the .msg asset type will display the old thumbnail image if the old thumbnail image exists in the user's cache. To ensure display of the updated .msg thumbnail, be sure to clear your cache.

Categorize button enables expanded selections

The 'Categorize' button, found in Instrument UIs for Accelerator for Retail implementations, now displays objects in both the External and Internal Data Sources hierarchies when clicked. Previously, only objects in the Internal Data Sources hierarchy would display in the item picker as objects that could be selected and re-categorized.



Importing Instrument configurations

Users that import Instrument configurations from a 2024.4 system into a 2025.1 system will see an error display related to ConfigurationEntityReferences. This error should be disregarded as it relates to an attribute

no longer relevant for Instrument that has now been removed. It does not indicate the import failed or is incomplete. It should be noted that as the attribute has been deleted for 2025.1, systems that have been upgraded to 2025.1 cannot then be downgraded to 2024.4 versions or earlier.

More audit messages

Customers should be aware that if they have an audit message business action configured for a workflow, they will begin to see more audit messages. Previously, when a workflow-wide audit message business action was configured for a workflow, audit messages would not get sent for the automatic transitions from a parallel workflow to the contained workflow clusters and to the initial states of those clusters.

STEPXML schema changes from 2024.4 to 2025.1

The STEPXML format parameter options in the Export Manager and OIEP Output Template are extended to align with the XSD (PIMOutputTemplate.xsd). Refer to the 'STEPXML options are expanded' note within Data Exchange Enhancements and Changes.

No changes have been made to PIM.xsd.

Elasticsearch reindexing

Starting with STEP 2025.1, updating to the latest STEP version may automatically reindex Elasticsearch configurations present on the system. If an Elasticsearch configuration or Elasticsearch event processor has not been active for 90 days, the related index may be removed. If an index has been removed no results will appear on the faceted search screen in Web UI or Instrument.

Enhancements discontinued

FAB-DIS exchange format: Starting with this release, FAB-DIS will no longer receive new enhancements. While it remains available and supported, this exchange format is expected to be desupported and removed in a future update.

Deprecated functionality

Syndigo integration: Syndigo is now deprecated, and the functionality is no longer supported and/or available for new installations. Customers currently using this integration should transition to an alternate syndication functionality. It will be removed with the 2025.3 update.

Functionality to be removed / discontinued

ASCII format downloads for AutoCare: AutoCare will discontinue ASCII format downloads by the end of 2025, and introduce JSON file support. Refer to the 'JSON file format support for AutoCare' section of the Data Exchange Enhancements and Changes update note.

Use of reflection in JavaScript business rules: In JavaScript business rules, reflection has been used to access non-public methods in the API. Since reflection can be a security risk and can potentially lead to performance issues and other unexpected issues during upgrade, it will be disabled with the 2025.3 update.

A scheduled healthcheck was introduced in the 2023.3 update that identifies business rules that use reflection, and a warning with the text 'Attempted to call reflection API...' is written to the step.0.log. To prepare for reflection being disabled, rewrite the reported rules to use publicly available methods. If the needed functionality is not public, create an idea in Community or reach out to your Stibo Systems representative.

For more information, refer to the General Enhancements and Changes release note.

End-of-life schedule for STEP updates

Below is a table outlining the end-of-life schedule for the STEP updates shown. Refer to the updated STEP Update and End-of-Life Information topic in the System Update and Patch Notes section for more information about quarterly update target dates and support end dates for future updates.

Update	Update Available to Customers	EOL for on-prem and other non-SaaS v2 systems	EOL for SaaS v2 systems not enrolled in continuous updates	EOL for SaaS v2 systems enrolled in continuous updates
11.0	June 8, 2022	June 8, 2025	June 8, 2025	N/A
11.1	November 30, 2022	November 30, 2025	November 30, 2025	N/A
11.2	June 7, 2023	March 7, 2026	March 7, 2026	N/A
2023.3	September 27, 2023	September 30, 2024	September 30, 2024	N/A
2023.4	December 13, 2023	June 13, 2026	June 13, 2026	N/A
2024.1	March 27, 2024	March 31, 2025	March 31, 2025	September 30, 2024
2024.2	June 12, 2024	September 30, 2026	September 30, 2026	December 31, 2024
2024.3	September 16, 2024	September 30, 2025	September 30, 2025	March 31, 2025
2024.4	December 11, 2024	December 31, 2027	December 31, 2026	June 30, 2025

Starting with the 2025.1 update, all feature updates are exclusive to SaaS customers.

Update	Update Available to SaaS Customers	EOL for SaaS v2 systems not enrolled in continuous updates	EOL for SaaS v2 systems enrolled in continuous updates
2025.1	March 26, 2025	March 31, 2026	September 30, 2025

Customers should update as soon as possible to the latest version of the Stibo Systems Enterprise Platform (STEP). Contact Stibo Systems Support if you have questions and/or to receive help and guidance on how to update to a supported version.

Software errors reported for the versions shown above may be rejected once support ends. Issues in progress for those updates will be closed on the end-of-life (EOL) date. It is not possible to extend the support services for desupported versions.

Online Help / Documentation Changes

With every update, documentation updates occur. In addition to online help that is updated as part of the projects listed in this update note set, users should be aware of the following documentation updates when updating to 2025.1:

- Since on-premises installations are no longer supported with 2025.1, the Platform and Software Support topic, previously published with each update, has been replaced with an update-specific topic that outlines the Windows and Mac client requirements for using STEP. The 2025.1 STEP Client Requirements information can be found in the System Update and Patch Notes documentation.
- Access to update videos has been expanded. They are now also available on [YouTube](#) and on our [Product Updates](#) site.
- The STEP Instrument Documentation has been moved into the Instrument User Interface section within the STEP Documentation. This change streamlines documentation access for users so that they no longer have to go to two different documentation sets to get the full information they need to work within the new UI.
- Workbench images in documentation continue to be updated to show the restyled UI. This is an ongoing project that will continue over the next several updates. We encourage you to base your evaluation of our product on its current features and functionality rather than documentation images.
- Documentation updates have been made and continue to be in progress to remove on-premises references and directions.
- The release number now displays at the bottom of each page in online help to help users easily identify what version of documentation that they are accessing.

Developments in New UI for STEP

Summary

As part of our ongoing commitment to deliver a simplified user experience in our interfaces, Stibo Systems continues to enhance and extend the functionality of our UIs by adding new capabilities to Stibo Systems' new UI for STEP (also referred to as Instrument)—expanding efficiency and applicability.

- Objects can now be **created and initiated into workflows** directly from either a Tasks perspective or a Browse perspective.
- It is now possible to **sort and filter** within the reference table of the details page.
- It is now possible to **control which filters display** on the Instrument search screen.
- Admin users can now control which **tabs display** in specific perspectives.
- **Orphan attributes** are now clearly indicated in the interface.
- **Errors in New UI configurations** now include guidance to better enable admins to fix them.
- New **Approve button** for quick approvals in search screen.

Important: The STEP Instrument Documentation has been moved into STEP Documentation. This change streamlines documentation access for users so that they no longer have to go to two different documentation sets to get the full information they need to work within the new UI.

Details

New objects created and initiated into workflows

Users can now create and initiate objects into workflows using a new 'Create' button that can be enabled within the toolbar of a Tasks perspective. Previously, any new objects would need to first be created within a Browse perspective, be initiated into a workflow, and then the user would navigate to an appropriate Tasks perspective to continue to make changes to the object. The new 'Create' button allows for both the create and initiate operations to be completed at the same time and allows the newly created object to be accessed and enriched immediately.

For more information on using the new 'Create' button, review the Creating and Initiating a New Object within the Tasks Perspective topic in the Instrument User Interface documentation.

Alternatively, users can now both create objects and initiate objects into workflows directly from the Browse perspective using the new object creation action functionality. This functionality allows a new object to be automatically initiated into a workflow immediately after creation.

For more information, review the Creating new objects topic in the Instrument User Interface documentation.

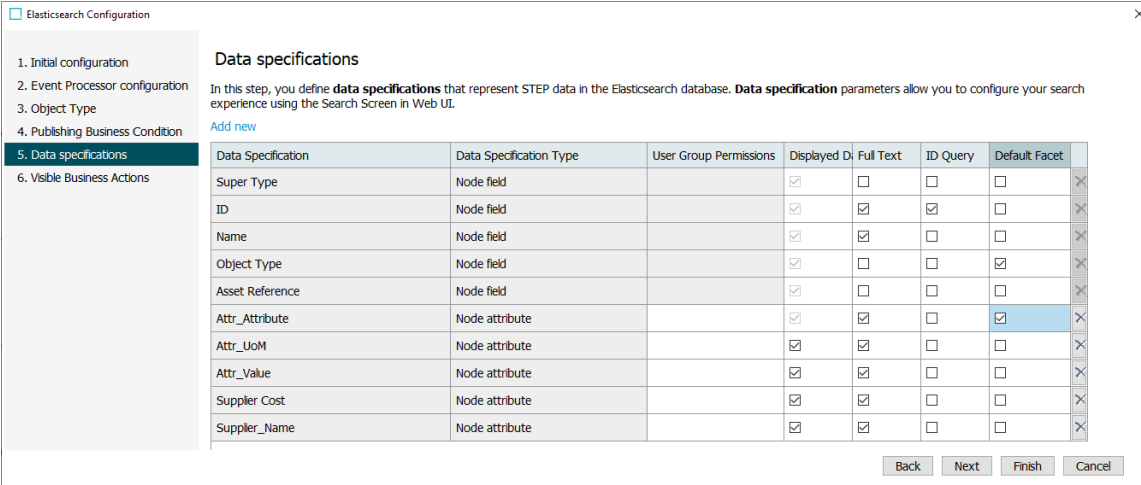
Sorting and filtering in reference table of details page

Sorting and filtering options are now available within the reference table of the details page. This new functionality makes it easier to find specific items in a large reference table.

For more information, review the References topic within the Instrument documentation.

Search filters improved

The Instrument search screen can now be configured to only display filters relevant to the search results. To determine which filters can be applied, specify the relevant nodes as 'Default Facet' in the Data specifications step of the Elasticsearch configuration.



Elasticsearch Configuration

1. Initial configuration
2. Event Processor configuration
3. Object Type
4. Publishing Business Condition
5. Data specifications
6. Visible Business Actions

Data specifications

In this step, you define **data specifications** that represent STEP data in the Elasticsearch database. **Data specification** parameters allow you to configure your search experience using the Search Screen in Web UI.

[Add new](#)

Data Specification	Data Specification Type	User Group Permissions	Displayed Di	Full Text	ID Query	Default Facet
Super Type	Node field		<input checked="" type="checkbox"/>	<input type="checkbox"/>	<input type="checkbox"/>	<input type="checkbox"/>
ID	Node field		<input checked="" type="checkbox"/>	<input checked="" type="checkbox"/>	<input checked="" type="checkbox"/>	<input type="checkbox"/>
Name	Node field		<input checked="" type="checkbox"/>	<input checked="" type="checkbox"/>	<input type="checkbox"/>	<input type="checkbox"/>
Object Type	Node field		<input checked="" type="checkbox"/>	<input type="checkbox"/>	<input type="checkbox"/>	<input checked="" type="checkbox"/>
Asset Reference	Node field		<input checked="" type="checkbox"/>	<input type="checkbox"/>	<input type="checkbox"/>	<input type="checkbox"/>
Attr_Attribute	Node attribute		<input checked="" type="checkbox"/>	<input checked="" type="checkbox"/>	<input type="checkbox"/>	<input checked="" type="checkbox"/>
Attr_UoM	Node attribute		<input checked="" type="checkbox"/>	<input checked="" type="checkbox"/>	<input type="checkbox"/>	<input type="checkbox"/>
Attr_Value	Node attribute		<input checked="" type="checkbox"/>	<input checked="" type="checkbox"/>	<input type="checkbox"/>	<input type="checkbox"/>
Supplier Cost	Node attribute		<input checked="" type="checkbox"/>	<input checked="" type="checkbox"/>	<input type="checkbox"/>	<input type="checkbox"/>
Supplier_Name	Node attribute		<input checked="" type="checkbox"/>	<input checked="" type="checkbox"/>	<input type="checkbox"/>	<input type="checkbox"/>

Back Next Finish Cancel

Previously, the available filters could not be controlled, and were only determined by the first 40 objects that appeared in the search results. Not only could irrelevant filters appear, but any important filters that only applied to objects beyond the first 40 would not display.

For more information on the Instrument search screen, review the Utilities topic.

For more information on Elasticsearch configurations, review the Creating and Maintaining an Elasticsearch Configuration topic.

Improved tab display

Instrument admin users can now control which tabs display for users. A new setting in the Configuration tool called 'Views' enables admins to determine whether a configured tab should display:

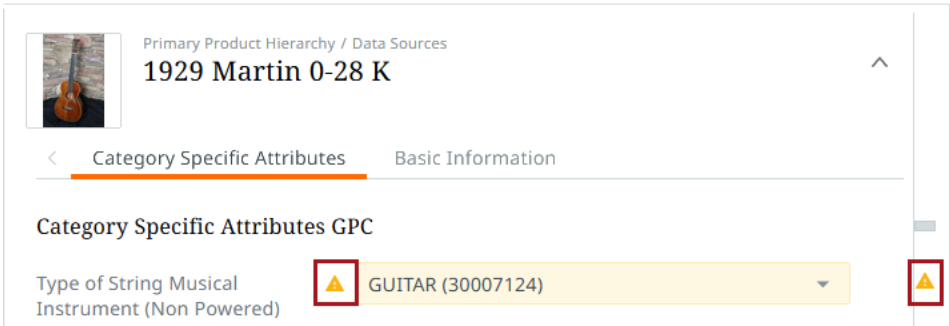
- in all perspectives
- in Tasks perspectives only
- in non-Tasks perspectives only (i.e., Browse and Collections perspectives)

This level of control enables admins to configure interfaces to the exact needs of user groups. For example, when the tabs are properly configured, users working on tasks in workflows would not see Browse-specific tabs that are not relevant to their work. This change gives admins the ability to create a more streamlined, fit-for-purpose interface that allows users to complete their tasks more efficiently.

For more information on configuring tabs and their display in Instrument, review the Configuration tool topic.

Improved orphan attribute display

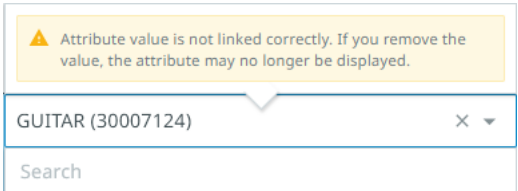
Attributes in an orphaned state are now displayed to Instrument users with clear visual indicators. Orphaned attributes, which are attributes that have one or more values but are not linked to a product or classification, are now indicated in both the details and list views with warning indicators (⚠). In the details view, the indicator displays beside the attribute, as well as in the side panel as shown in the screenshot below:



In the list view, an orphan attribute displays with a warning indicator beside the attribute value, as well as with a row indicator displaying vertically at the beginning of an affected row, as shown below:

	ID	Name	Object type	Primary im...	Type of String Musical I...
<div><div></div><div></div></div>	tstINT-101015	1929 Martin 0-28 K	Internal Source Record		<div><div></div>GUITAR (30007124)</div>
<div><div></div><div></div></div>	tstGOLD-101015	1929 Martin 0-28 K	Golden Record		<div>GUITAR (30007124)</div>

Double-clicking on the warning indicator, or hovering over the vertical row header, displays an informational pop-up to further guide the user on the issue. Shown below is the information pop-up.



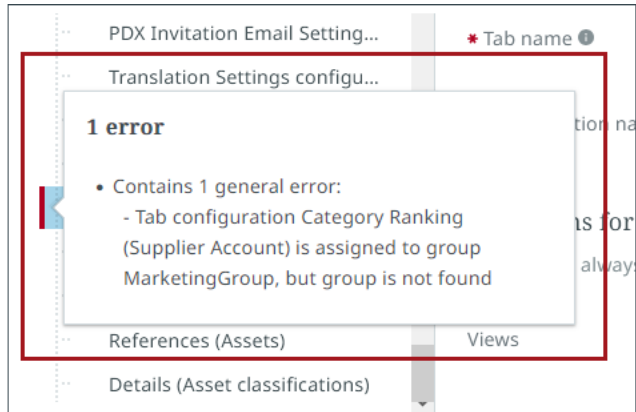
For more information on orphan attributes, review the Linking Orphan Attributes topic.

Inoperative configuration guidance

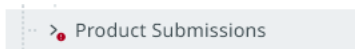
When admins build Instrument configurations using the Configuration tool, sometimes options are selected that can disable the configuration. With this update, inoperative configurations for work areas, perspectives, views, and tabs are now clearly displayed to the admin user, along with guidance on how to fix the issue.

As an example of a configuration-disabling selection, if an admin has assigned a perspective to a user group that has since been deleted, the affected perspective will display with a red vertical line.

To access the guidance on how to correct the configuration, the admin user can hover their cursor over the red line, and the guidance text will display in a small pop-up, as shown in the screenshot below.



If the configuration error is on a perspective and the admin collapses the work area in which the perspective resides, the work area will display with a red circle next to the work area name, as shown in the screenshot below:



If all work areas are collapsed in the hierarchy, the red circle displays next to the 'All work areas & perspectives' node, as depicted below:



If the work area, perspective, view, or tab configuration is determined by the system to be in error, the 'Duplicate' and 'Save' buttons will be inactive and cannot be clicked on until the misconfiguration is corrected.

For more information on creating Instrument configurations, review the Configuration tool topic.

New Approve action button in the search screen toolbar

The search screen now includes a new action button called 'Approve' that allows users to directly approve the selected objects in the search screen.

For more information, refer to the topic Utilities in the Instrument User Interface documentation

Update **2025.1**

Approval from Search Results in the New UI

☒ **Business** ☐ Configuration

Customer, Supplier, and Location MDM Enhancements

Summary

The following enhancements to Customer, Supplier, and Location MDM functionality have been made as part of the 2025.1 update. These changes are outlined below and described in the Details section that follows:

- The **Match and Merge Importer** has undergone significant enhancements to improve performance, stability, and traceability during data imports.
- During ad hoc unmerging, the '**Unmerge Action**' button is now disabled when unmerging is not feasible.
- The connectivity between STEP and the **Stibo Systems MDM Connector for Salesforce** has been further enhanced, enabling efficient bi-directional data flow and improved implementation experiences.

Details

Optimized performance of the Match and Merge Importer

With this update, the Match and Merge Importer has been significantly improved to deliver better performance, stability, and traceability.

The optimizations make data handling more efficient, resulting in improved throughput and import operations that are up to 50 percent faster, while stability enhancements ensure more reliable processing, minimizing interruptions and errors. Additionally, the traceability of the Match and Merge Importer has been enhanced, enabling users to identify the reasons for potential slowdowns during the import process, thereby facilitating better troubleshooting and optimization of import operations.

Initially, the improved version of the Match and Merge Importer will be released exclusively to selected customers who will be notified directly regarding the upgrade. If you are interested in being among the first customers to receive this update, contact Stibo Systems.

For further details or assistance, contact Stibo Systems Support.

'Unmerge Action' button disabled if unmerge is not possible

When performing ad hoc unmerging, the 'Unmerge Action' button configured on a Node Details screen is now disabled if unmerge action is not possible.

The conditions for the Unmerge Action button to be enabled are the following:

- The Golden Record is active (has not been deactivated).
- The Golden Record has two or more Source Records, or it has one or more Golden Records merged into it.

For more information, refer to the topic Unmerging Golden Records in the Matching, Linking, and Merging documentation.

Enhanced connectivity between STEP and Salesforce

The Stibo Systems MDM Connector for Salesforce is a powerful Salesforce app designed to support functionalities such as bi-directional data flow and synchronization, as well as 'Merge' and 'Search before Create' scenarios. The MDM Connector app works with any supported version of STEP.

With the 2025.1 update, we have further enhanced the connectivity and interoperability between STEP and the Salesforce connector. This update focuses on accelerating time to value and improving implementation experiences. The app is optimized for Salesforce Lightning and provides forward compatibility with future Salesforce updates.

At present, the app is only available under an early adopter license. As an early adopter, you will work closely with Stibo Systems' experts and the product management team in leveraging the MDM Connector for Salesforce and shaping the direction of the initiative moving forward.

Express your interest in the early adopter release of the MDM Connector Salesforce app by emailing sfdcconnector@stibosystems.com.

Data Exchange Enhancements and Changes

Summary

The following enhancements and changes have been made as part of the 2025.1 update:

- When exporting referenced assets and delivering a ZIP file using any format that requires mapping, such as Excel or Generic JSON, the Execution Report is streamlined to no longer include each zipped asset file name. Now, the report lists the total number of assets, the total time spent creating the zipped file, and the total size of the zipped file. The functionality is available in the Export Manager and OIEPs. Refer to the Referenced Assets in ZIP file topic in the Digital Assets documentation.
- A schedule is no longer required for the REST Direct receiver and cleaning up background processes is now handled via automatic deletion of BGP data. Refer to the REST Direct Receiver topic in the Data Exchange documentation and the Managing BGP Data topic in the System Setup documentation.
- The 'Transformation by XSLT' pre-processor can be used to generate MD5 values, for example to produce unique identifiers. Refer to the IIEP - Configure Transformation by XSLT Pre-processor topic or the OIEP - Post-processor - Transformation by XSLT topic, both in the Data Exchange documentation.
- Performance is improved for large Excel Smartsheet exports from the Web UI to eliminate system crashes. Now, by default, sorting is disabled for all exports and a 200 limit is imposed for attributes (columns). When exported from the Web UI or Instrument, if necessary, the data is split into multiple export files with 10,000 products in each file; when exported from the workbench, file splits are not supported, but a limit of 15,000 products is imposed. Refer to the Sorting Smartsheets in Web UI topic in the Web User Interfaces documentation and the Additional Information About Smartsheets topic in the Data Exchange documentation. Contact Stibo Systems support for assistance in changing these new defaults.
- The localization features in our PDX Onboarding Channels have been extended with support for language specific attribute group names, category names, and units of measure. Refer to the Handling STEP Dimension-Varying Data in PDX Onboarding Channel topic in the Product Data Exchange section of the Data Integration documentation.

These enhancements and changes have been made as part of the 2025.1 update and are described in the Details section that follows:

- The **STEPXML options** in the Export Manager and OIEP Output Template are now extended to align with the XSD.
- AutoCare reference data importers now support **JSON file** format.
- The latest AutoCare update restructures brand data, with the **Brand Importer** and associated workflow supporting the new model.
- Support extended for **BMEcat 2005.2** import, export, and version selection.
- **FORDER** tag support to define block and aspect order for ECLASS Advanced is now available.

Details

STEPXML options are expanded

The STEPXML format parameter options in the Export Manager and OIEP Output Template are extended to align with the XSD.

Parameters that previously allowed Yes or No, now allow the following selections:

(Existing configurations saved with 'Yes' selected now display with the 'All' option.)

- Include Attribute Transformations: None, All
- Include Collection Definitions: None, All, Selected
- Include Contexts: None, All
- Include eCatalogs: None, All
- Include Event Queues: None, All
- Include Key Definitions: None, All
- Include Match Codes: None, Selected, All (While the 'None' option is not part of the XSD, it allows no match codes to be exported.)
- Include Tags: None, None, All

Parameters that previously allowed None, Minimum, or All, now allow:

- Include Export Configurations: None, Selected, Minimum, All
- Include Import Configurations: None, Selected, Minimum, All
- Include Transformation Lookup Tables: None, Selected, Minimum, All

The Include Status Flags parameter previously allowed None, Selected, or All; and now allows None, Selected, All, or Referenced.

The Include Bulk Update Configurations parameter previously allowed No, Minimum, or Yes; and now allows None, Selected, Minimum, or All. While the 'None' option is not part of the XSD, it allows no bulk update configurations to be exported.

For details on STEPXML parameters available in Export Manager and OIEPs, refer to the STEPXML Outbound Parameters topic in the Data Exchange documentation.

JSON file import support for AutoCare

AutoCare plans to discontinue support for ASCII format downloads by the end of 2025 and has introduced JSON file support.

To ensure continuity, the AutoCare reference data importer in the PMDM for Automotive solution now also supports JSON file imports. This update enables users to work with AutoCare reference data without modifying existing workflows.

No changes to the current configuration are required to start using JSON-formatted files, and they can be used interchangeably with ASCII files.

AutoCare Brand Importer now supports the updated brand model

The latest AutoCare update has changed how brands are structured in AutoCare files. The AutoCare Brand Importer now supports this new model. The Validation and Conversion states in the AutoCare Brand Import workflow have been updated accordingly.

Key Features:

- Brands are now assigned under BrandParent, replacing the previous Brand Owner hierarchy.
- The Brand object type now includes BrandParent as a parent object type, alongside the existing Brand Owner.

Action Required:

- **Existing Implementations:** Run AutoCare Easy Setup → Configure AutoCare Data Model to apply these changes.
- **New Implementations:** New users will see brands directly under BrandParent when running Easy Setup for the first time.

Cleaning up obsolete BrandOwners from the system is recommended. Users should clean up old BrandOwners and verify that all brands are correctly rebinded to their BrandParents.

BMEcat 2005.1 - output compliance with BMEcat 2005.2

This release extends support for importing and exporting ECLASS Advanced files in the BMEcat 2005.2 format. A new 'Output Type' parameter has been added to the Select Format step in the 'BMEcat 2005.1' Export Manager, allowing users to select the desired BMEcat output file version.

For more information, refer to the topic Exporting in BMEcat 2005.1 Format in the Solution Enablement: ECLASS Advanced documentation

FORDER Support in ECLASS Advanced Editor

This release introduces support for the FORDER tag in the ECLASS Advanced Editor screen, allowing users to define the display order of blocks and aspects when working with ECLASS Advanced objects. Users can manually adjust the order of elements using Grip Dots icon without needing to modify the FORDER attribute directly. This enhancement improves product descriptions by ensuring a structured and logical presentation of data.

For more information, refer to the topic ECLASS Advanced Editor Screen in the Web User Interfaces documentation.

General Enhancements and Changes

Summary

The following enhancements and changes have been made as part of the 2025.1 update:

- Performance is improved, and reliability is enhanced for the workbench launcher.
- Although external authentication is commonly used for user logins, STEP also supports managing user accounts internally. Based on valuable feedback, the login experience for STEP-managed user accounts has been enhanced. These improvements are being gradually rolled out to all SaaS customers in the coming months, independent of the 2025.1 update, and include:
 - Alignment with our latest styling standards
 - Improved environment identification
 - Expanded error messaging
 - A more streamlined Multi-Factor Authentication (MFA) user experience
- New GraphQL logging is available in the Administration Portal on the Logs tab. Log entries for GraphQL POST requests include the 'query' and 'operationName'; introspection queries are omitted.
- Starting with STEP 2025.1, the IBM WebSphere MQ library will no longer be supported.
- When initiating a Lock Free Schema Change background operation, the system now checks if any other background processes are currently 'waiting' to perform a LFSC operation on the same object. If there are, several background processes may run in a sequence.
- A new configuration field called 'ZIP Include Timestamp' has been added to the Delivery Method editor for REST Direct Outbound Integration Endpoints. When enabled, a timestamp is included in the file name of the ZIP file that is generated when a REST call is made, helping users differentiate the files.
- Several third-party libraries have been updated for DaaS.
- Starting with STEP 2025.1, updating to the latest STEP version may automatically reindex Elasticsearch configurations present on the system. If an Elasticsearch configuration or Elasticsearch event processor has not been active for 90 days, the related index may be removed. If an index has been removed no results will appear on the faceted search screen in Web UI or Instrument.
- Reference Target Lock Policy is now set to 'relaxed' by default when creating assets, entities, classifications, or product object types to improve performance of parallel creations of multiple references to the same target object. Refer to the Reference Target Lock Policy on Object Types topic in the System Setup documentation.

The following enhancements and changes are documented in the SaaS Self Service 'User guide':

- Configuration properties that are used within custom extensions are now available in the SaaS Self-Service UI. This simplifies maintenance and removes the reliance on Stibo Systems support, specifically in cases where the configuration property values must be modified often. To support this functionality, submit a custom extension change request ticket in the Stibo Systems Service Portal to allow maintenance of the properties in the Self-Service UI.
- Four new properties have been added to the SaaS Self-Service UI which allow the user to customize the system badge name and color. These properties include: 'Workbench.Environment.Color.Back', 'Workbench.Environment.Color.Fore', 'Workbench.Environment.Type.Long', and 'Workbench.Environment.Type.Short'. If the values for any of these configuration properties are null or invalid, then the badge name and color display using the default settings.
- New sensitive files management functionality allows a user to upload sensitive files within the SaaS Self-Service UI, eliminating uploads over SFTP and the need for assistance from Stibo Systems' support. Uploaded files are encrypted and cannot be accessed externally. The maintenance of configuration properties SaaS Self-Service UI has been extended to support referring to these sensitive files. This functionality is available when using SSH private keys for the SFTP delivery method, the Change Package Git delivery method and the Git delivery method, as well as for keys with a Google Cloud Storage gateway integration endpoint, and credential files for Amazon SQS delivery and receiver methods.

These enhancements and changes have been made as part of the 2025.1 update and are described in the Details section that follows:

- Administrators can view the **last active date** for users, which enables identification of inactive users.
- Administrators can identify business rules that have the greatest impact on system performance with the new Business Rules screen in the **Performance Analysis Tool**.
- Users can now gather node-level task-related workflow data based on new admin-selectable function input property parameters for the **HTML Function component** in Web UI.
- Users will have an easier time **changing the column width** within a Node List with updated drag handle functionality.
- **Reflection in JavaScript business rules** will be disabled with the 2025.3 update. Refer to the Details section below to find information on how to identify rules that need to be rewritten before reflection is disabled.
- Users can now invoke a patch request through **REST gateway** via a business action.

Details

New last active date information for Users

Admins can now easily determine the last activity date for users by configuring a date attribute that records daily if a user accessed STEP. Searching for the date attribute with Advanced Search allows users to save the results in a collection, export the results as STEPXML, or run a bulk update on the results. Last active date functionality provides information often required by auditors and can be used to report on active and/or inactive users.

Advanced Search

Search

LastActivityDate (LastActivityDate) < today - 30

> Advanced

+ ▾

Reset

Search

Displaying 2 of 2 results


Show Details


Name


user-1 (USER-1)

user-7 (USER-7)

Operations on Entire Result







To enable last active date tracking, the new `LastActivityDateAttributeID` property must be configured to specify the ID of a last active date attribute. The associated attribute must be a description attribute, have no dimension dependencies, be valid on User objects, and use the 'ISO Date' validation base type.

For more information, refer to the User Last Activity topic in the System Setup documentation.

Performance Analysis Tool now includes business rule data

The Performance Analysis Tool now includes a Business Rules screen that can help identify business rules that have the greatest impact on system performance based on the evaluation time, transactions performed, and objects cached. Admins can use this data to target business rules that may be improved by refactoring or rewriting, or using other functionality to eliminate the need for a business rule, thereby improving system performance.

Object cache size and transaction size data is only available for the business rules that use the most resources. Transaction size data is only available for business rules that update STEP data.

Custom

21/01/2025, 23:59:59 to 23/01/2025, 23:59:59

Download as Excel

ID	Name	Total Time	Average evaluation time	Longest evaluation time	Evaluation count	Transaction Size (Avg)	Transaction Size (Max)	Transaction Size (Total)	Object Cache Estimate (Avg)	Object Cache Estimate (Max)	Object Cache Estimate (Total)
Referenced1	Referenced1	3,899 ms (0:00:03.899)	1 ms (0:00:00.001)	16 ms (0:00:00.016)	4780						
TrueIfAutoAppWithBR	TrueIfAutoAppWithBR	9,813 ms (0:00:09.813)	1 ms (0:00:00.001)	14 ms (0:00:00.014)	13562						
TrueIfIdEquals	TrueIfIdEquals	43,171 ms (0:00:43.171)	1 ms (0:00:00.001)	20 ms (0:00:00.020)	86040						
TrueIfSCBAA	TrueIfSCBAA	13,557 ms (0:00:13.557)	1 ms (0:00:00.001)	10 ms (0:00:00.010)	26346						
action-reading	action-reading	535 ms (0:00:00.535)	268 ms (0:00:00.268)	270 ms (0:00:00.270)	2				60003	60003	60003
action-updating	action-updating	7,209 ms (0:00:07.209)	7,209 ms (0:00:07.209)	7,209 ms (0:00:07.209)	1	100000	100000	100000	120009	120009	120009
condition-reading	condition-reading	474 ms (0:00:00.474)	474 ms (0:00:00.474)	474 ms (0:00:00.474)	1				30036	30036	30036
condition-reading	condition-reading	1,201 ms (0:00:01.201)	400 ms (0:00:00.400)	592 ms (0:00:00.592)	3				60042	60042	60042

For more information, refer to the Performance Analysis Tools topic in the Performance Analysis documentation.

Extended parameters for the Web UI HTML Function component

The properties for the HTML Function component, used to render the output of a called business function as HTML, have been expanded to include selectable function string input parameters. Changing the parameter values allows admins to determine what task-related information (i.e., workflow / workflow state) to show for an object within a Node Editor, helping users gather needed data. This functionality first became available with the 2024.4 update.

Expanded area for cursor response when changing column width of a Node List

Node List column resizing in the Web UI has been enhanced with a larger drag handle, making column width adjustments easier. This update eliminates the need for super precise cursor placement at column boundaries.

Use of reflection in JavaScript business rules will be disabled in 2025.3

In JavaScript business rules, reflection has been used to access non-public methods in the API. Since reflection can be a security risk and can also potentially lead to performance issues and unexpected issues during upgrade, it will be disabled with the 2025.3 update.

With the 2023.3 update, a Configuration healthcheck 'Reflection usage in business rules' was made available. It identifies business rules that use reflection, and a warning with the text 'Attempted to call reflection API...' is written to the step.0.log. To prepare for restricted access of reflection usage, rewrite the reported business rules to use publicly available methods. If the needed functionality is not public, create an idea in Community or reach out to your Stibo Systems representative.

For information on the healthcheck, refer to the Healthcheck Test Index topic in the Administration Portal documentation.

New 'patch' Gateway REST method

The JavaScript API has been extended to include a Patch Gateway REST method for **com.stibo.gateway.rest**. This new invoke action can modify the response body as well as headers.

For more information on the JavaScript API functionality, refer to the Technical Documentation, accessible at [system]/sdk or from the system Start Page, within the Extension API and Scripting API sections from the Javadoc link.

For more information on REST gateway, refer to the Gateway Integration Endpoint Bind topic in the Resource Materials documentation.

Platform and Software Support Changes

This section lists current and future planned changes to platform and software support.

The changes in platform and software support from version 2024.4 to 2025.1 are listed below. **Customer action may be required.** Users should also read the 2025.1 Update Guide along with this topic prior to updating.

There are two additional topics (License and Component Lifecycle and Deprecations and Lifecycle Changes) that users should be familiar with that cover deprecations, other lifecycle changes, etc.

Current Updates

The support for the items below will begin / end with the 2025.1 update.

Note: On-premises installations are no longer supported.

Deprecated functionality

Refer to the 2025.1 Update Guide for more information.

- Syndigo integration

Enhancements discontinued

- FAB-DIS exchange format

Future Updates and End-of-Life (EOL) Notifications

The support for the items below will begin / end as indicated.

Removal of functionality

- AutoCare will discontinue ASCII format downloads by May 7, 2025, and introduce JSON file support. Refer to the Data Exchange Enhancements and Changes update note for more information.
- Use of reflection in JavaScript business rules to be removed in the 2025.3 update. Refer to the General Enhancements and Changes update note for more details.

Server and client support

- Support for InDesign CC 2025 (20.0) will be added in 2025.2
- Support for InDesign CC 2023 (18.0) will end with the 2025.2 update.

Baseline EOL

Below is a table outlining the end-of-life schedule for currently supported STEP updates:

Update	Update Available to Customers	EOL for on-prem and other non-SaaS v2 systems	EOL for SaaS v2 systems not enrolled in continuous updates	EOL for SaaS v2 systems enrolled in continuous updates
11.0	June 8, 2022	June 8, 2025	June 8, 2025	N/A
11.1	November 30, 2022	November 30, 2025	November 30, 2025	N/A
11.2	June 7, 2023	March 7, 2026	March 7, 2026	N/A
2023.3	September 27, 2023	September 30, 2024	September 30, 2024	N/A
2023.4	December 13, 2023	June 13, 2026	June 13, 2026	N/A
2024.1	March 27, 2024	March 31, 2025	March 31, 2025	September 30, 2024
2024.2	June 12, 2024	September 30, 2026	September 30, 2026	December 31, 2024
2024.3	September 16, 2024	September 30, 2025	September 30, 2025	March 31, 2025
2024.4	December 11, 2024	December 31, 2027	December 31, 2026	June 30, 2025

Starting with 2025.1, all feature updates are exclusive to SaaS customers.

Update	Update Available to SaaS Customers	EOL for SaaS v2 systems not enrolled in continuous updates	EOL for SaaS v2 systems enrolled in continuous updates
2025.1	March 26, 2025	March 31, 2026	September 30, 2025

Refer to the updated STEP Update and End-of-Life Information topic for more information about quarterly updates and support end dates.

Customers should update as soon as possible to the latest version of the Stibo Systems Enterprise Platform (STEP). Contact Stibo Systems Support if you have questions and/or to receive help and guidance on how to update to a supported version.

Software errors reported for the versions shown above may be rejected once support ends. Issues in progress for those updates will be closed on the end-of-life (EOL) date. It is not possible to extend the support services for desupported versions.

Miscellaneous Bugfixes

In general, bugfix tickets are included in Change Logs. Change Logs are accessible from within the Stibo Systems Service Portal. To view the logs, log in and go to the 'Update Information' dashboard. Change Logs are linked under each update version (for all supported versions of STEP). SaaS users can access these Change Logs within the STEP Documentation that is available from their system's Start Page or from within workbench using the Help menu (F1).

Note: Customers may want to search Stibo Systems Service Portal for their Issue Numbers (if shown). To do so, while in the Stibo Systems Service Portal, navigate to Issues (in the header bar) and select 'Search for Issues.' Click on the 'Advanced' option on the filtering bar and then type in 'issue=' and the issue number. Press Enter or click the magnifying glass icon to run the query. **Users can only view Stibo Systems Service Portal issues for issue numbers that they have privileges to access. If the issue is not applicable to the user searching, then a 'No issues were found to match your search' message displays.**

The list below covers fixes that were made outside of regular projects and/or customer issues and components that were updated after 2024.4 was originally made available and prior to or with the 2025.1 update.



GENERAL FIXES

■ Fix for the order of attributes in an export file (Excel)

Previously, when the Show Group Headers parameter was selected in the Multi Edit Display Mode, the sort order used in the Web UI was not used when the data was exported in Excel. Now, the sorting order matches. Attributes are sorted in ascending order according to their Display Sequence (if configured), or Title, or ID (ID is used if the Title is empty). This change allows users to work more efficiently since they do not need to manually reorder the list or complete other burdensome maintenance to control the order.

■ JavaScript logging improved for invalid binds

Exceptions caused by invalid bind errors are now logged in the `js.*.log`, as well as in the `step.*.log`.

■ Fix to update user email value via REST API v2

The email value for a user can now be updated using PATCH. Previously, attempting to update the email mistakenly removed its value.

■ Fix for empty values reported by GraphQL and REST API v2

Empty values are now reported accurately:

- GraphQL no longer returns an empty ValueEntry array when the attribute has no value.
- GraphQL and REST API v2 both return a value when the attribute is LOV-based, and a Value ID is selected for which there is no value in the ID-based LOV.

■ **Metadata attributes now displayed on gateway endpoint objects**

Metadata attributes that are valid on the Gateway Integration Endpoint Type basic object type are now displayed on all gateway endpoint object type instances.

■ **Fix for hotfolder receivers using nested repositories**

The internal cache mechanism introduced in the 2024.3 update to ensure enhanced performance for hotfolder receivers with large file numbers has been adjusted to also work with nested repositories.

■ **Changes to About STEP 'Detailed version information'**

Due to changes in our software build process, in 2024.4 and older updates, a setback has removed the list of components on the 'Detailed version information' link from the About STEP page. In 2025.1, the 'Detailed version information' now includes only license-enabled components and the 'change log' link provides insights for other changes included in the SaaS image on the environment. Refer to the Accessing STEP System Information topic in the Getting Started documentation.

■ **Fix to database commit barrier for InMemory**

Under certain conditions the InMemory database commit barrier was allowing unauthorized pods to commit updates to the database. This has been fixed so that only authorized pods can commit.

■ **Fixes and improvements in change packages, including 'Before Install' and 'Install Preview'**

- Generally, the status was incorrect for assets included in Change Packages because the 'asset.uploaded' date and time was wrongly considered when comparing items. Since it does not impact the content of the asset, the upload date is no longer considered, which makes comparisons reliable.
- Previously, sometimes comments for import configurations or setup elements such as completeness metrics, business functions, or outbound integration endpoints included extra '&' strings, which polluted analysis when displaying comparison windows. These extra strings have been removed.
- Data in the 'Before Install' and 'Install Preview' cells is now correctly styled as 'read-only' and the comparison window is now accessible by clicking new ellipsis buttons.

Refer to the Statuses and Discrepancies in Change Package Items topic in the Configuration Management documentation.



COMPONENT FIXES

■ **Fix for asynchronous translation functionality not working**

There was an old behavior where it was possible to export translations when the source and the target were the same language, which has been removed. It is considered an invalid use case. However, the customer's setup relied on the old behavior and a solution was made to retain the old behavior on their systems. Any other customers with this same issue should contact Stibo Systems Support for details. (component: async-translation)

■ **Fix for translated files not returning from Lionbridge**

When doing a Lionbridge translation, the background processes in Quarantine state will no longer block for retranslation of an object. (component: async-translation)

■ **Fix for runtime exception when pushing the objects in Main workspace or Main and Approved workspace**

When upgrading indices from STEP 11.0 to the newer versions, the upgrade plugin will no longer look at the triggering workspaces assigned to the Elasticsearch configurations. From now on, it will upgrade all of them. (component: elasticsearch-integration)

■ **Fix for ML Match Recommendation training failed; Retrying state is not creating new models and never recovers after service issue is fixed**

An adjustment was made in the process of getting ML Match Recommendations: Training failure results in the whole recommendation process failure and does not trigger fail / retry logic. (component: matchingagent)

■ **Fix for STEP single node outage**

The default number of ports for the Office Preview conversion has been decreased from 4 to 2 in order to decrease the memory usage of Libre Office processes. (component: officepreview)

■ **Fix for bug causing process to cycle endlessly**

Fixed a bug in the lock mechanism used by InMemory STEP systems. On clustered STEP systems with more than one server, the lock mechanism could, in very rare cases, cause a deadlock resulting in background processes and other operations getting stuck. The only solution to this was to restart one or more of the servers. This issue has been fixed. (component: inmemory)

■ **Fix for Elasticsearch issue**

The Index Management Tab will no longer be shown on SaaS v2 systems if the customer has multi-tenant endpoints or no Elasticsearch configurations. It will still appear on Elasticsearch configurations that were indexed to single tenant. (component: elasticsearch-integration)

■ **Fix for value generator warning threshold not working with high numbers**

Fixed a problem occurring when a warning message about reaching a value generator threshold was not sent to the configured email address. (component: value-generator)

■ **Fix for perspectives do not appear in the Configuration tool**

If the configurations for Instrument contained references to system nodes that were not present on the system, reading of the configurations would fail, meaning that the configurations would not show up in the Instrument Configuration tool.

Additional summary: In Instrument when users navigate to the 'Work Areas & Perspectives' tab in configuration tool, certain configured perspectives were not appearing. This issue was caused by an ownership issue in the work area configuration. The problem has now been resolved, ensuring that all configured perspectives are displayed as expected. (component: instrument)

■ **Fix for error: OptimisticLockRetryCountExceeded**

Fixed issue where value generators would get into an optimistic lock if creating a new object and before committing the transaction applying a value generator to said object. (component: value-generator)

■ **Fix for error preventing new product creation in Web UI**

Fixed an issue in which value generators would get into an optimistic lock when creating and applying a value generator to an object in a business action. (component: value-generator)

■ **Fix and RCA for the production environment outage**

When working with very large collections, the In-Memory database could run out of memory, causing the application to crash. This has been fixed. (component: inmemory)

■ **Fix for TecDoc problem**

Corrected the third-party libraries (upgrade) to support API changes and avoid NoClassDefFound exceptions while working with zip files. (component: automotive)

■ **Fix for ECLASS Advanced imports are failing**

Added support for import of attributes / properties of URI_TYPE_Type, which broke the import. The general policy is changed to report unknown base validation types as errors but continue imports regardless. (component: eclass-advanced)

■ **Fix for initial Elasticsearch reindexing and indexing BGPs errors and fails**

Fixed a problem occurring when Elasticsearch indexing could fail if STEP Context IDs contained a backslash character, causing problems with file creation. (component: elasticsearch-integration)

■ **Fix for compatibility issue with STEP Extension API Async Example**

There was an issue in which STEP Extension API Async Example did not work due to incompatibility with Java. The compatibility issue has been fixed. (component: external-async-kernel)

■ **Removed stibosw from the sudoers file**

The requirement for the stibosw user to run commands as root has been removed and so has the configuration of sudoers that allowed it.

■ **Fix for value generators stuck**

Fixed issue where values generated in an algorithm value generator would not check if it had generated before.

■ **Fix for issue with IIEP (inbound integration endpoint) after a 2024.2 update**

An improved error message was added for when the splitter business action for a business action Event Processor did not call the addMessage() method. Instead of a NullPointerException, a meaningful error message will be shown in the execution log. (component: business-action-processor)

■ **Fix for TecDoc Application Manager Screen - not able to configure business actions**

Fixed an unexpected exception occurring when showing an Application Bulk Update automotive component in Design Mode. (component: automotive)

■ **Fix for PDS channel status - unexpected error in Web UI**

Web UI users will no longer get an unexpected error when expanding the PDS channel status row. This is fixed by refactoring toggle display logic by replacing jQuery-based DOM manipulation with native JavaScript methods. (component: pds-channel-status)

■ **Fix for inability to create Elasticsearch Index Background Process**

Fixed a problem that occurred when values longer than 4000 bytes were entered in Cassandra-based STEP systems. Prior to this fix, a small window of opportunity existed that could cause the system to produce an error like, 'Unable to find blob segment...', because the blob content could be written shortly after the value object. This is now fixed. (component: elasticsearch)

■ **Fix for leading zeros being stripped**

Now, the leading zeros will be shown for the DUNS Number header on the Web UI D&B Match Candidates Screen, if the leading zeros were enabled on a system. (component: dnb-integration)

■ **Fix for PCdb - fails on Conversion Process / Fix for PCdb Conversion NullPointerException**

Fixed problem where a NullPointerException was thrown during the Autocare PCdb Conversion Import Process. (component: automotive)

■ **Fix for GDSN - error on BMS Import**

Fixed issue where import files would sometimes be ignored by the GDSN importer. (component: gdsn2-receiver)

■ **Fix for missing extValues for attributeLinks in MongoDB**

It was not possible to get the ID of a value of a List of Values in AttributeLink, because the extValues document for the AttributeLink was not exported. Now, the JSON Converter is changed so that the extValues document for the AttributeLink will be exported. Then, the LOV value ID will be accessible. (component: mongodbadapter)

■ **Fix for Elasticsearch failed indexing / BGP disappears after a while and the configuration is stuck in an 'in-progress' state**

Increasing lifespan of the Elasticsearch reindex background processes to avoid situations where customers cannot check their history or retry a failed BGP after passage of time. (component: elasticsearch-integration)

■ **Logging for GDSN component model / new Target Market TI for Publish not working**

Added logging to facilitate troubleshooting for GDSN publisher. (component: gdsn2)

■ **Fix for work areas and perspectives do not appear in the Configuration tool**

If some configurations were mistakenly marked 'preset' while being owned by a user, reading of the configurations would fail. This means that the configurations would not show up in the Instrument Configuration tool. This is now fixed. (component: instrument)

■ **Fix to allow Instrument UI to run business rules marked as Run As Privileged**

An issue occurred that did not allow business rules configured as Run as Privileged to run in the Instrument UI. A code change has been implemented that corrects that issue. (component: instrument)

■ **Fix for Elasticsearch configurations that cannot be deleted**

An error occurred that prevented deletion of Elasticsearch configurations from the STEP Workbench (if they had never been used). To correct the issue, a deletion issue was fixed for unindexed Elasticsearch configurations. (component: elasticsearch-integration)

■ **Logging added for Elasticsearch view and export are not working**

Added additional logging to the Search screen Excel export BGP. (component: elasticsearch-integration)

■ **Fix for PIES file upload failing for Asset Description values**

Fixed NullPointerException thrown when importing PIES file. (component: automotive)

■ **Fix for SaaS DAMRDM - errors in PROD log: Could not retrieve cluster details**

Removed unnecessary checks to single-tenant Elasticsearch. (component: elasticsearch-integration)