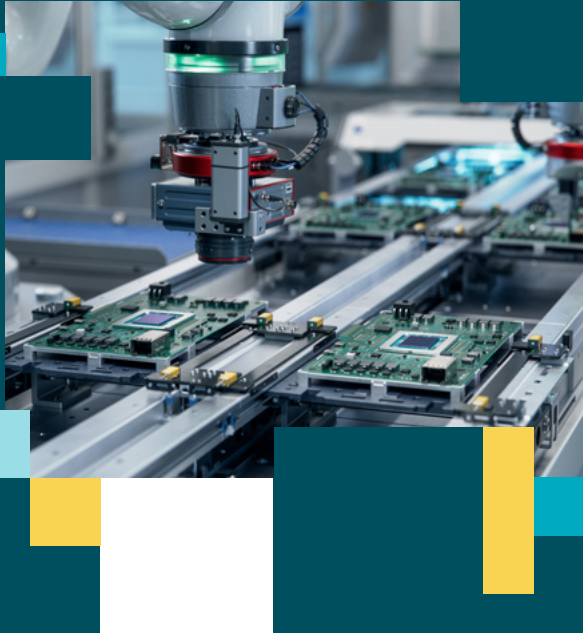




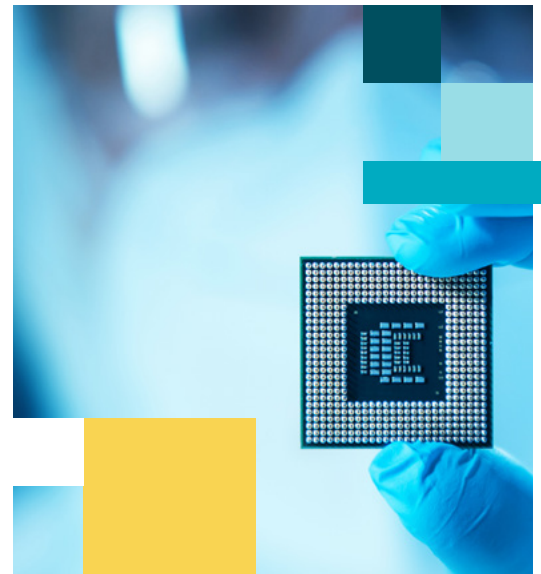
## Unify Your Data to Improve Precision, Yield and Supply Resilience in High-Tech Manufacturing



Electrical component manufacturers operate in environments where precision, speed and traceability define competitive advantage. From chip fabrication to PCB assembly and system integration, companies manage millions of interconnected data points across components, suppliers and product configurations.

The problem? These data points often live in silos — PLM, MES, ERP and supplier systems rarely align. The result is version conflicts, engineering changes lost in translation and costly production delays.

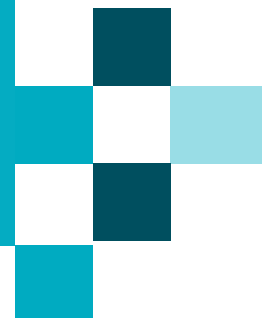
Stibo Systems Platform creates a single source of truth across design, manufacturing and sourcing — ensuring every component, specification and supplier record is accurate, synchronized and compliant.



“

With Stibo Systems, we aligned design, sourcing and production data across multiple sites. This improved our time to market by 20% and reduced production scrap.”

**VP of Manufacturing Systems,**  
Global Electronics OEM



## 1. Synchronize design and production data for precise execution

In high-tech manufacturing, accuracy at the micro level defines yield and performance. Stibo Systems connects design and production systems for the real-time data consistency that drives performance.

### Key capabilities:

- Integration between PLM, ERP and MES for component and BOM synchronization
- Version control for engineering changes and PCB revisions
- Automated validation of part and configuration data
- Real-time data visibility across multiple production lines
- Controlled design data sharing with manufacturing partners

### Benefits for key stakeholders:

**Engineering:** Prevent mismatched revisions and assembly errors

**Production:** Improve yield and throughput consistency

**Quality:** Ensure every build matches specifications

### Benefits for key stakeholders:

**Procurement:** Improve sourcing accuracy and mitigate supply risk

**Engineering:** Maintain visibility into part availability and lifecycle

**Compliance:** Simplify regulatory documentation and audits

## 2. Strengthen supply chain and component data governance

Electronics manufacturers depend on vast networks of global suppliers, and with Stibo Systems, you get accurate supplier and component data that reduces risk and supports compliance.

### Key capabilities:

- Supplier and component Master Data Management (MDM)
- Obsolescence and lifecycle tracking for electronic parts
- Integration with supplier portals and Approved Vendor Lists (AVL)
- Automated duplicate detection and alternate sourcing recommendations
- Compliance with REACH, RoHS and conflict-mineral regulations

## 3. Improve traceability across manufacturing networks

Precision manufacturing requires complete traceability from wafer lot to finished assembly. Stibo Systems provides unified visibility across all manufacturing and test operations.

### Key capabilities:

- Lot, batch and serial number traceability
- Integration with MES and test systems for data capture
- Product genealogy from raw material to final assembly
- Automated certificate and inspection data management
- Audit-ready traceability for customer and regulatory requirements

### Benefits for key stakeholders:

**Quality:** Accelerate root-cause analysis and nonconformance tracking

**Operations:** Enable traceable data flows across global production sites

**Customers:** Deliver verified, documented product lineage

**Benefits for key stakeholders:**

**Engineering:** Shorten ECO cycle time and reduce manual coordination

**Operations:** Implement changes consistently across plants

**Executives:** Accelerate time to market with fewer launch disruptions



## 4. Accelerate product launch and change management

Rapid design evolution defines the electronics industry. Stibo Systems streamlines engineering change management across global sites and contract manufacturers.

**Key capabilities:**

- Engineering Change Order (ECO) automation
- Multi-site synchronization of BOMs and configuration rules
- Integration with ERP and supplier collaboration tools
- Automated validation of affected parts and documents
- Historical version control for full design traceability

## 5. Drive quality and compliance through centralized data

With increasing complexity in global regulations, manufacturers need governed data to demonstrate product safety and environmental compliance. Stibo Systems delivers that trustworthy data.

**Key capabilities:**

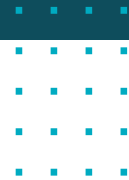
- Centralized repository for compliance data and documentation
- Integration with regulatory databases and supplier inputs
- Automated reporting for REACH, RoHS, WEEE and conflict-minerals compliance
- Test data linkage to product and supplier records
- Quality and reliability analytics tied to production data

**Benefits for key stakeholders:**

**Quality:** Improve audit readiness and reduce manual effort

**Compliance:** Maintain current regulatory certifications

**Executives:** Protect brand integrity and avoid costly fines

**Benefits for key stakeholders:**

**Operations:** Reduce variability and downtime

**Engineering:** Identify design-to-production optimization opportunities

**Executives:** Gain visibility into global manufacturing performance



## 6. Enable end-to-end visibility and predictive insights

High-tech manufacturers thrive on data-driven decision-making. Stibo Systems delivers integrated visibility from design to delivery, enabling predictive insights that enhance agility.

**Key capabilities:**

- Cross-domain analytics for product, supplier and process data
- Integration with BI and digital-twin environments
- Predictive failure and yield analysis through trusted data models
- Unified performance dashboards across engineering and operations
- Collaboration support for multi-tier manufacturing networks

# Build a connected, compliant and agile high-tech manufacturing enterprise

Stibo Systems Platform connects design, supply chain and production data to eliminate silos, improve yield and strengthen resilience across the electronics value chain.

By aligning accurate, governed data across every domain, manufacturers gain the agility and trust needed to thrive in an increasingly volatile market.

For manufacturers managing intricate supplier networks and distributor relationships, Stibo Systems Business Partner Data Cloud's AI-powered deduplication, firmographic enrichment and automated onboarding streamline operations, maintain compliance and provide visibility into indirect sales channels.

And our Customer Experience Data Cloud eliminates duplicates, ensures data quality and maintains regulatory compliance. Where customer relationships span multiple touchpoints, our solution connects customer data with locations and products to optimize cross-sell opportunities, improve loyalty programs and enable data-driven decisions.

Both Business Partner Data Cloud and Customer Experience Data Cloud centralize, manage and sync data — customer or business partner — across siloed operational and sales solutions.

See how Stibo Systems powers digital precision for electronics and semiconductor manufacturers at [stibosystems.com/electrical-component](https://stibosystems.com/electrical-component).



## About Stibo Systems

Stibo Systems is a leading enabler of trustworthy data through AI-powered master data management. Built on a robust and flexible platform, our SaaS solutions empower enterprises around the globe to deliver superior customer and product experiences. Our trusted data foundation enhances operational efficiency, drives growth and transformation, supports sustainability initiatives and bolsters AI success. Headquartered in Aarhus, Denmark, Stibo Systems is a privately held subsidiary of Stibo Software Group, which guarantees the long-term perspective of the business through foundational ownership. More at [www.stibosystems.com](https://www.stibosystems.com).